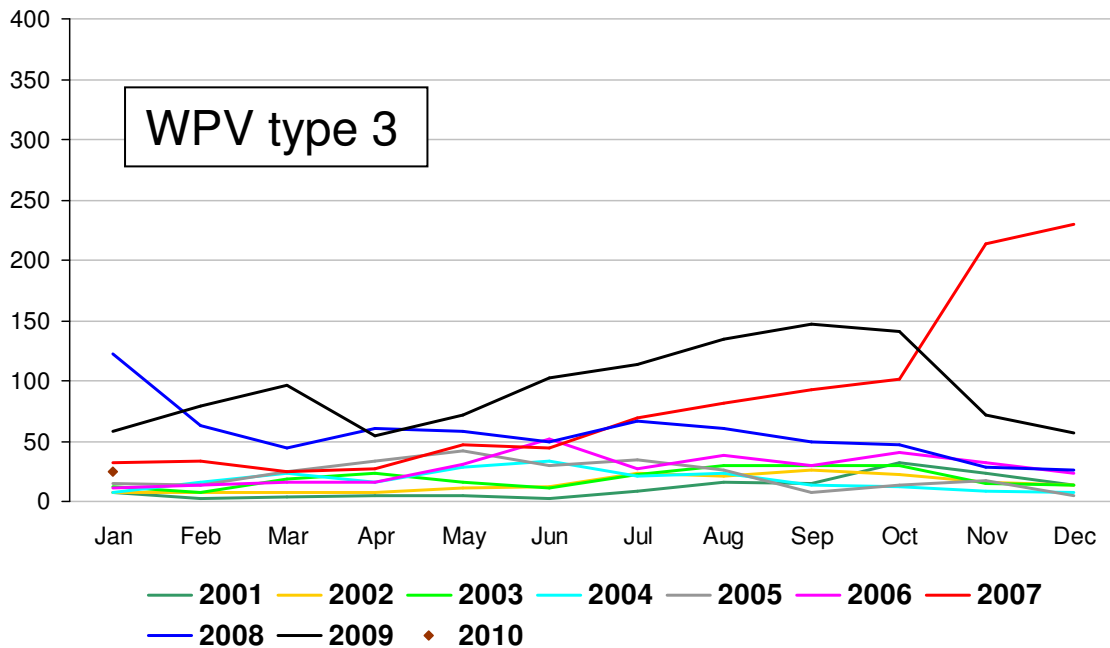
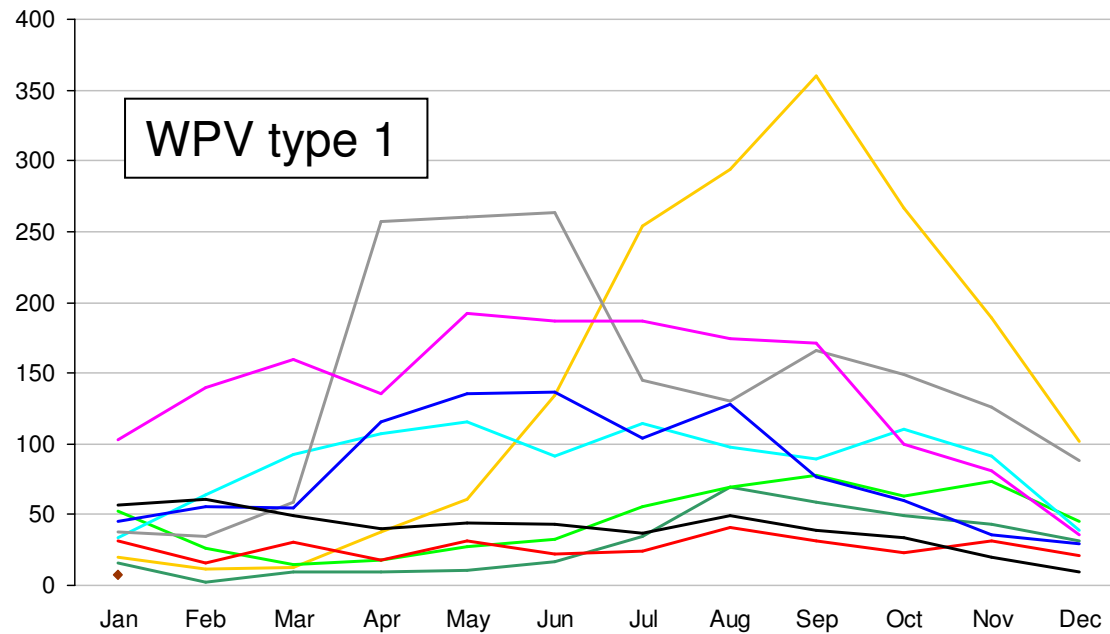


# Monthly distribution of Wild Poliovirus cases, 2001-2010



Data in WHO/HQ as of 02 Mar 2010. WPV type 1 includes 3 cases in 2009, 2 cases in 2008, 3 cases in 2007, 2 cases in 2006, 3 cases in 2005, 2004, 2002 and 4 cases in 2001 with a mixture of W1W3 virus. Cases with onset in February 2010 will be reflected at the end of March