

Report on
Independent monitoring
in Côte d'Ivoire

Polio campaign
4-7 December 2009

Data as per Dec 09

Polio Campaign in Côte d'Ivoire mOPV1

Côte d'Ivoire:
NID 4-6 December 2009

- 19/19 Regions
- 83/83 districts,
- Target (under 5yrs):
6,478,791

Data report

Completeness: **Yes** Timeliness: **Yes**

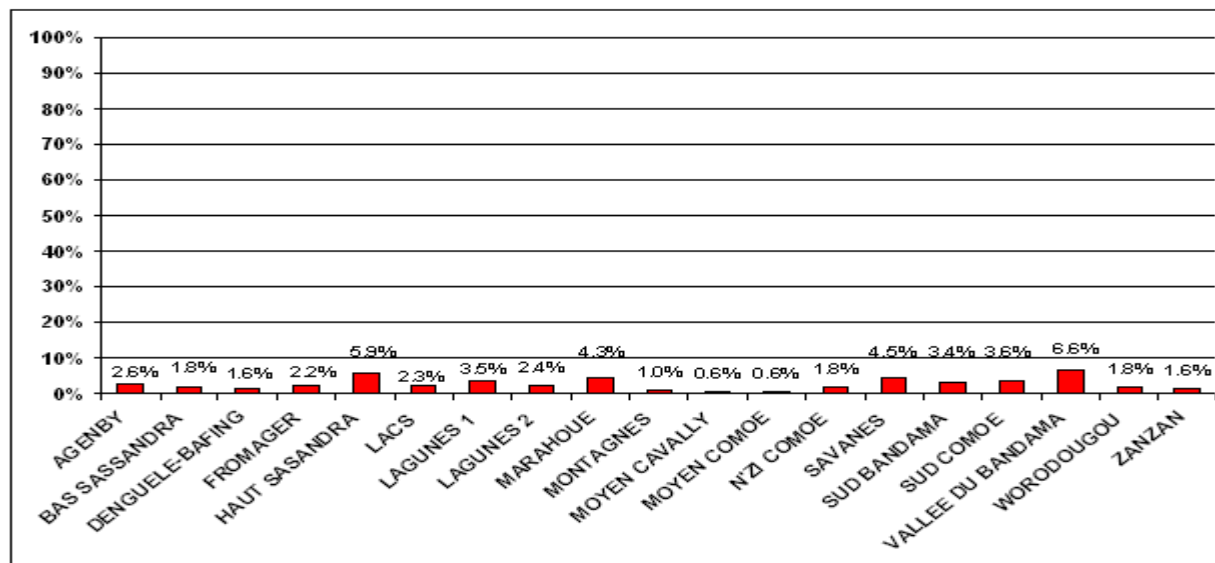


Independent monitoring process

Duration of the end-process Independent Monitoring: 2 days

| Region | Number of IM involved | Source of Independent monitors | Selection of independent monitors | Number and % of subdistricts monitored | Type of end-process monitoring | | Total # < 5Y monitored |
|----------------------|-----------------------|---|-----------------------------------|--|--------------------------------|---------------|------------------------|
| | | | | | House to House | Street survey | |
| AGENBY | 6 | 100% Other Partners | 100% Ministry of Health | 36 (62%) | Yes | | 2109 |
| BAS SASSANDRA | 8 | 50% NGO, 25% Education, 25% Other | 100% Ministry of Health | 48 (47%) | Yes | | 2186 |
| DENGUELE-BAFING | 8 | 100% NGO | 100% Ministry of Health | 28 (42%) | Yes | | 2762 |
| FROMAGER | 4 | 50% NGO/Educ, 50% Other | 100% Ministry of Health | 24 (34%) | Yes | | 1071 |
| HAUT SASANDRA | 6 | 33% NGO, 33% NGO/Educ, 33 Education | 100% Ministry of Health | 36 (51%) | Yes | | 1751 |
| LACS | 8 | 25% NGO, 25% NGO/Education, | 100% Ministry of Health | 49 (67%) | Yes | | 2442 |
| LAGUNES 1 | 18 | 56% NGO/Education, 33% Education, 11% Other | 100% Ministry of Health | 73 (66%) | Yes | | 4690 |
| LAGUNES 2 | 18 | 78% NGO/Education, 11% Education, 11% Other | 100% Ministry of Health | 66 (77%) | Yes | | 4424 |
| MARAHOUÉ | 8 | 50% NGO/Educ, 50% NGO | 100% Ministry of Health | 33 (78%) | Yes | | 2725 |
| MONTAGNES | 12 | 100% NGO | 100% Ministry of Health | 58 (53%) | Yes | | 3611 |
| MOYEN CAVALLY | 8 | 100% NGO | 100% Ministry of Health | 23 (64%) | Yes | | 1985 |
| MOYEN COMOE | 4 | 100% NGO | 100% Ministry of Health | 24 (53%) | Yes | | 1343 |
| N'ZI COMOE | 12 | 17% NGO/Education, 17% NGO/MOH, 66% Other | 100% Ministry of Health | 66 (69%) | Yes | | 3402 |
| SAVANES | 8 | 75% NGO/Education, 25% Education | 100% Ministry of Health | 45 (41%) | Yes | | 1984 |
| SUD BANDAMA | 4 | 50% NGO, 50% Education | 100% Ministry of Health | 24 (35%) | Yes | | 1292 |
| SUD COMOE | 6 | 33% NGO, 33% NGO/Educ, 33 NGO/MOH | 100% Ministry of Health | 30 (47%) | Yes | | 1495 |
| VALLEE DU BANDAMA | 14 | 43% NGO/Education, 29% Education, 14% NGO, 14% Other | 100% Ministry of Health | 78 (73%) | Yes | | 3576 |
| WORODOUGOU | 4 | 100% NGO | 100% Ministry of Health | 23 (68%) | Yes | | 1462 |
| ZANZAN | 10 | 60% NGO, 20% NGO/Education, 20% Other | 100% Ministry of Health | 55 (49%) | Yes | | 2655 |
| Total Country | 166 | 37% NGO, 31% NGO/Education, 16% Other, 13% Education, 2% NGO/MOH, 1% Education/MOH | 100% Ministry of Health | 741 (55%° | Yes | | 46965 |

Independent monitoring results: % and number of children not immunized (based on finger marking)



| REGIONS | Target < 5 Y | End Process House to House | | | |
|----------------------|------------------|----------------------------|------------------------------------|-------------------------|------------------------|
| | | # < 5 Y monitored | # < 5 Y immunized with finfer mark | # < 5 Y missed children | % unimmunized children |
| AGENBY | 183,452 | 2,109 | 2,055 | 54 | 2.6% |
| BAS SASSANDRA | 129,389 | 2,186 | 2,146 | 40 | 1.8% |
| DENGUELE-BAFING | 747,397 | 2,762 | 2,719 | 43 | 1.6% |
| FROMAGER | 189,918 | 1,071 | 1,047 | 24 | 2.2% |
| HAUT SASANDRA | 443,408 | 1,751 | 1,647 | 104 | 5.9% |
| LACS | 138,952 | 2,442 | 2,387 | 55 | 2.3% |
| LAGUNES 1 | 969,712 | 4,721 | 4,555 | 166 | 3.5% |
| LAGUNES 2 | 1,085,892 | 4,424 | 4,319 | 105 | 2.4% |
| MARAHOUE | 218,280 | 2,742 | 2,623 | 119 | 4.3% |
| MONTAGNES | 303,481 | 3,611 | 3,575 | 36 | 1.0% |
| MOYEN CAVALLY | 217,757 | 1,853 | 1,841 | 12 | 0.6% |
| MOYEN COMOE | 190,300 | 1,343 | 1,335 | 8 | 0.6% |
| N'ZI COMOE | 205,871 | 3,402 | 3,342 | 60 | 1.8% |
| SAVANES | 370,579 | 2,062 | 1,970 | 92 | 4.5% |
| SUD BANDAMA | 251,930 | 1,292 | 1,248 | 44 | 3.4% |
| SUD COMOE | 147,364 | 1,495 | 1,441 | 54 | 3.6% |
| VALLEE DU BANDAMA | 322,211 | 3,732 | 3,486 | 246 | 6.6% |
| WORODOUGOU | 124,503 | 1,462 | 1,435 | 27 | 1.8% |
| ZANZAN | 238,395 | 2,659 | 2,616 | 43 | 1.6% |
| Total Country | 6,478,791 | 47,119 | 45,787 | 1,332 | 2.8% |

Additional quality indicators

| REGIONS | Reasons of missed child | | Parents aware of SIA in advance of team |
|----------------------|-------------------------|--------------------|---|
| | Absence of child | No team (re) visit | |
| AGENBY | 93% | 6% | 80% |
| BAS SASSANDRA | 76% | 21% | 64% |
| DENGUELE-BAFING | 12% | 12% | 72% |
| FROMAGER | 58% | 36% | 94% |
| HAUT SASANDRA | 65% | 35% | 69% |
| LACS | 94% | 6% | 74% |
| LAGUNES 1 | 75% | 23% | 82% |
| LAGUNES 2 | 73% | 20% | 97% |
| MARAHOUÉ | 72% | 28% | 69% |
| MONTAGNES | 44% | 56% | 91% |
| MOYEN CAVALLY | 55% | 36% | 84% |
| MOYEN COMOE | 100% | 0% | 94% |
| N'ZI COMOE | 87% | 3% | 94% |
| SAVANES | 64% | 36% | 76% |
| SUD BANDAMA | 41% | 25% | 71% |
| SUD COMOE | 98% | 0% | 86% |
| VALLEE DU BANDAMA | 68% | 29% | 71% |
| WORODOUGOU | 89% | 4% | 68% |
| ZANZAN | 74% | 9% | 78% |
| Total Country | 71% | 22% | 81 |